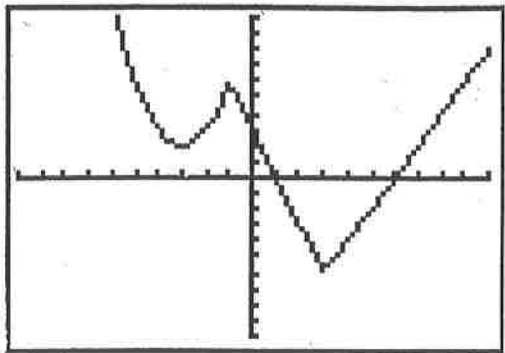


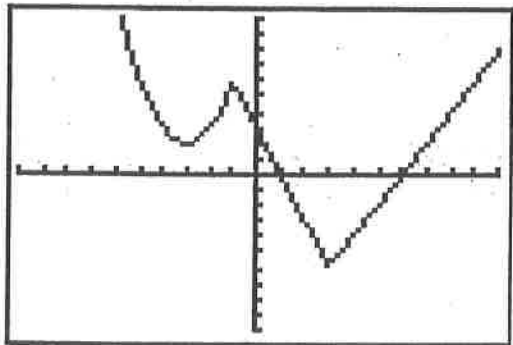
Activity 3: Transformations on Generic Graphs

Given: the generic graph shown below.

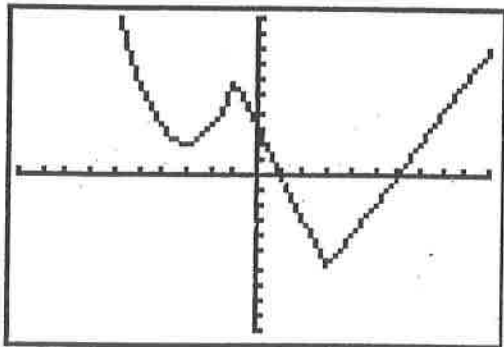


Sketch the graphs of the following transformations and describe the transformations in words.

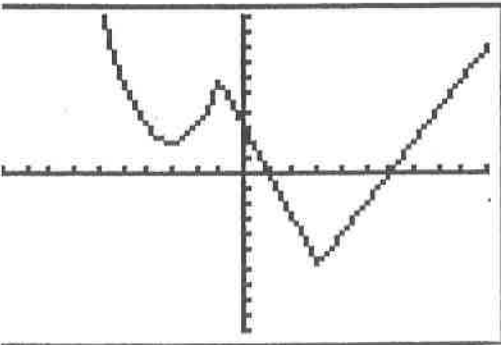
1. $y = f(x+2)$



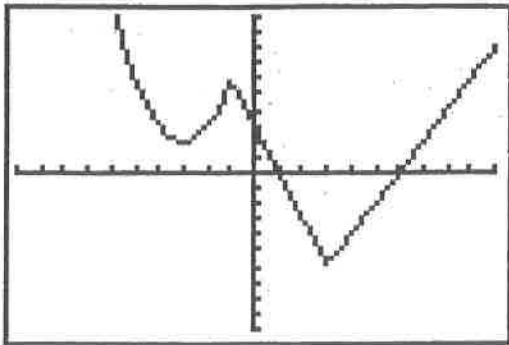
2. $y = f(x-2)$



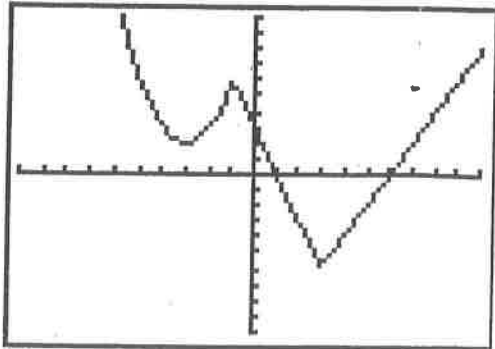
3. $y = f(x)+2$



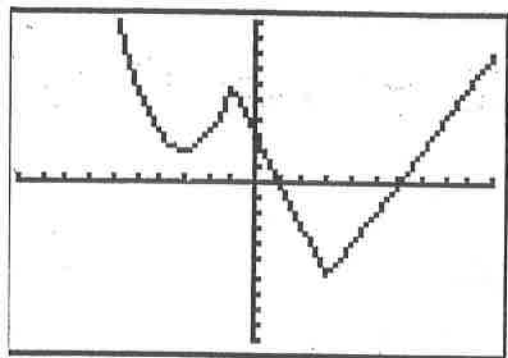
4. $y = f(x)-2$



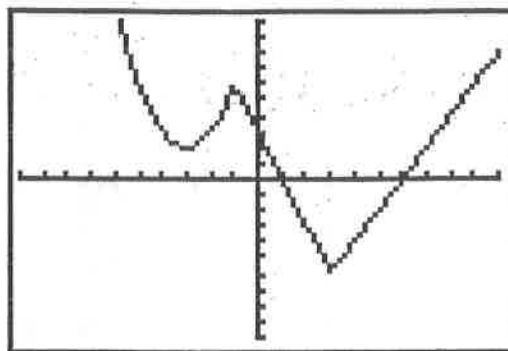
5. $y = f(2x)$



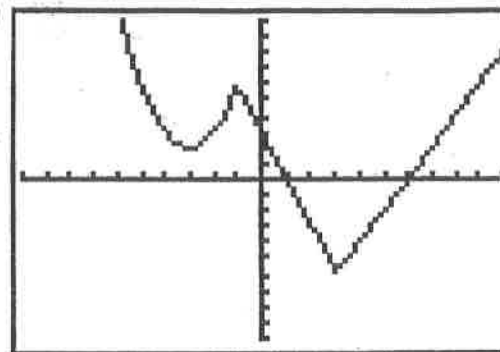
6. $y = f\left(\frac{1}{2}x\right)$



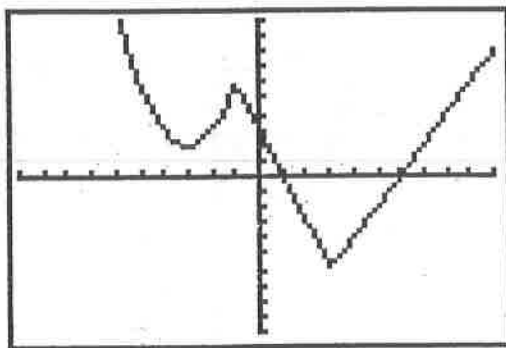
7. $y = \frac{1}{2}f(x)$



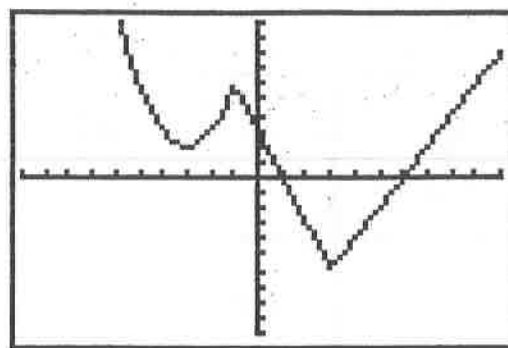
8. $y = 2f(x)$



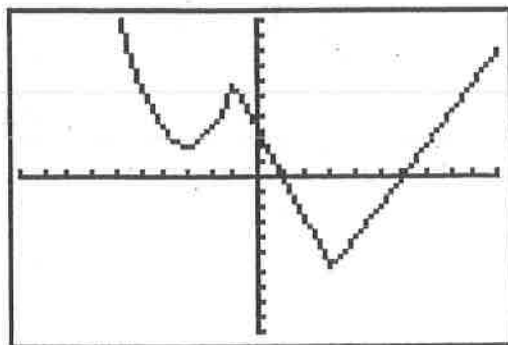
9. $y = -f(x)$



10. $y = f(-x)$



11. $y = |f(x)|$



12. $y = f(|x|)$

